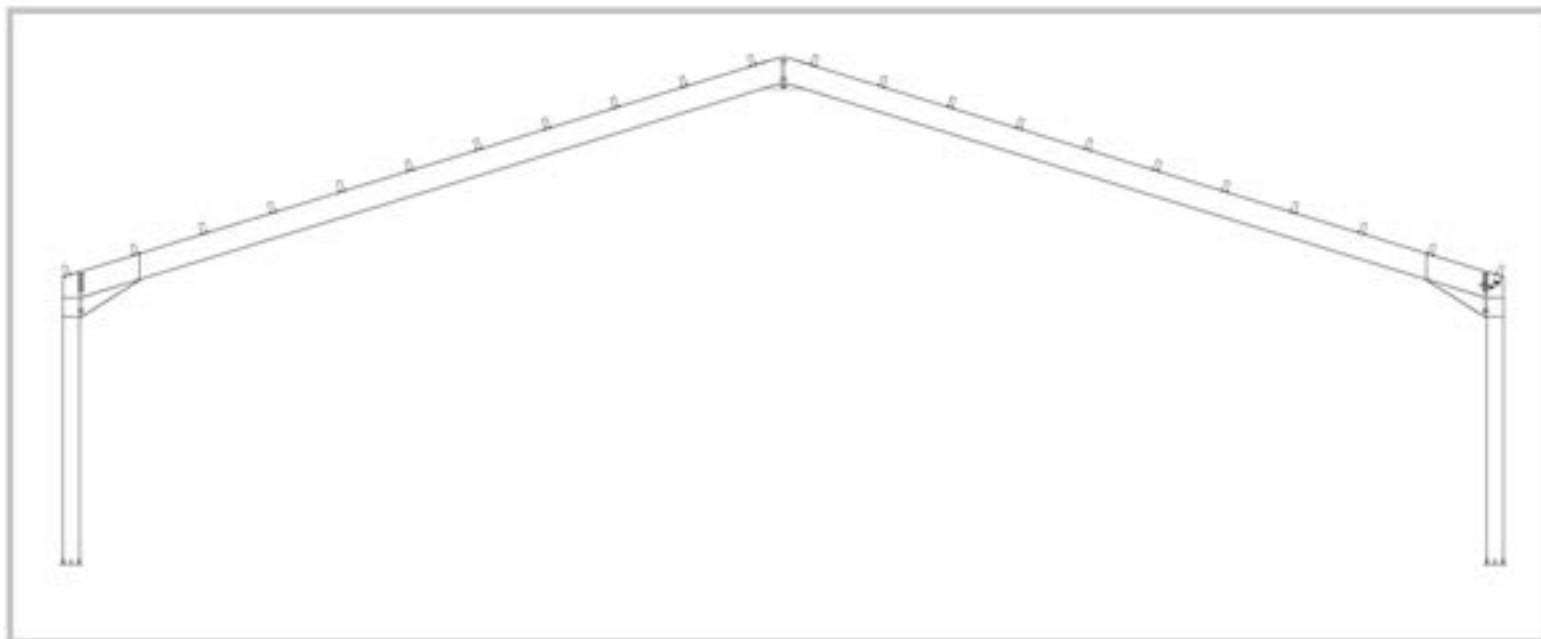




SPEROTTO

PF



SPECIFICATIONS

Width	8 - 10 - 12 - 14 - 16 - 18 - 20 m
Height to eave	2,50 - 3,00 - 3,50 - 4,00 - 4,50 - 5,00 m
Columns pitch	3 m
Slope	12° = 21%
Live load on roof	From 60 up to 300 Kg/m ²